

# VOICE OF PMRDA

Pulse of the Evolving Pune Metropolis

## SERVING THE SACRED

Honoring the Varkari Spirit Through Faith, Service and Sustainable Development...  
(Continued on Page 4 and 5)

### What's Inside?

- P2: The Pune Metamorphosis
- P3: The Pink Line's Promise
- P6 : Equity in Allotment
- P7 : PMRDA Events & Achievements
- P8: Wari 2026 Wishes

पालखी निघाली  
ज्ञानोबा - तुकोबांची  
ओढ पांढरंगाची।  
वारी पंढरीची,  
चालली मांदियाळी  
वैष्णवांची ॥



# The Pune Metamorphosis: On Equitable Growth and Infrastructure-led Urban Planning



## VISIONARY GOVERNANCE

**Dr. Abhijeet  
Chaudhari (IAS)**

Metropolitan Commissioner,  
PMRDA And Editor-in-Chief

Over the past decade, the Pune Metropolitan Region has emerged as a defining example of India's urban transition. Spanning 5,215 square kilometres and encompassing 674 villages, the region presents a unique challenge where high-tech industrial corridors coexist with agrarian landscapes. Addressing this spatial duality requires a planning framework that balances growth with inclusion. Under the Pune Metropolitan Region Development Authority (PMRDA), the focus has shifted from managing urban expansion to correcting long-standing disparities between the urban core and rural periphery, with the goal of creating a resilient and globally competitive mega-region.

To address the challenges of unplanned growth, PMRDA has adopted a strategy centred on spatial equity. The authority's priorities include strengthening mass mobility, expanding affordable housing, and improving the overall Ease of Living for residents. These efforts are supported by e-governance initiatives, streamlined building permission systems, and strict measures against unauthorized development, ensuring adherence to the regional Master Plan and promoting transparent administration.

A key pillar of this transformation is large-scale infrastructure development. The Hinjawadi-Shivajinagar Metro Line 3, a 23-kilometre Public-Private Partnership (PPP) project, is expected to significantly reduce travel time for thousands of commuters and improve regional productivity. Complementing this is the 83.12-kilometre Pune Inner Ring Road, designed to divert peripheral traffic from the city centre while connecting major economic nodes such as Lohegaon Airport, Hinjawadi, and the Chakan industrial belt. Together, these projects aim to enhance mobility, logistics efficiency, and economic integration across the metropolitan region.



Recognizing that sustainable development must be environmentally responsible, PMRDA has integrated ecological restoration into its infrastructure agenda. Pollution abatement initiatives for the Indrayani and Pawana rivers, supported by decentralized Sewage Treatment Plants, seek to improve water quality and strengthen long-term environmental resilience. This approach reflects a commitment to climate-conscious urban development.

Another defining feature of Pune's growth model is the adoption of Town Planning Schemes (TPS), which replace conventional land acquisition with land reconstitution. Under this framework, landowners receive developed plots with enhanced infrastructure, allowing them to share in the benefits of urbanization. Building on successful schemes in Mahalunge-Maan and Vadachi Wadi, PMRDA has expanded the model across multiple growth corridors. These efforts are reinforced by affordable housing initiatives under PMAY 2.0.

As Pune evolves into a major destination for Global Capability Centers and advanced manufacturing, transit-oriented development and integrated township planning are unlocking new investment opportunities. Guided by Vision 2030, PMRDA's focus on infrastructure, sustainability, and inclusive growth is positioning the Pune Metropolitan Region as a model of modern, liveable, and well-governed urban development.

# The Pink Line's Promise: On Pune's Mass Transit Evolution!

The Hinjawadi–Shivajinagar Metro Line 3 must become a template for synchronized urban governance and sustainable mobility.



**THE PROGRESSING  
PINK LINE**

**K. Manjulekshmi  
(IAS),**  
Additional Commissioner,  
PMRDA And Editor

The Hinjawadi–Shivajinagar Metro Line 3 transcends the conventional scope of urban mass transit infrastructure; it represents a decisive intervention in reshaping the economic and spatial geography of Pune. As the partial operationalization of this landmark corridor draws near, administrative focus has rightly shifted toward a rigorous matrix of operational efficiency, uncompromising safety standards, and high structural quality. In a rapidly expanding metropolitan region, transit systems cannot merely be reactive solutions to vehicular gridlock; they must act as proactive blueprints for smarter, highly integrated, and commuter-centric urban centers.

A recent comprehensive administrative and technical audit at the PMR 21 station in Modimbaug, Shivajinagar, highlights the critical phase the project has entered. Beyond assessing civil engineering milestones, such on-site reviews serve an essential governance purpose: identifying latent systemic bottlenecks and accelerating peripheral workflows necessary for statutory clearances. For an infrastructure

asset of this scale to deliver on its promises, the transition from civil construction to active commissioning requires the absolute elimination of bureaucratic delays and the maintenance of a rigorous, milestone-driven momentum.

The execution of a multi-tiered public-private partnership (PPP) project demands institutional synergy of the highest order. The close collaboration between the Pune Metropolitan Region Development Authority (PMRDA), the concessionaire PITCMRL, and the designated engineering corps offers a vital lesson in cooperative governance. Large-scale urban projects often falter not from a deficit of engineering capability, but from friction between overlapping jurisdictions. Sustaining this tight institutional alignment is imperative as the corridor transitions into its final phases of system integration and testing.

Once the initial phase is opened to the public, Metro Line 3 will offer immediate structural relief to one of Pune's most severely congested economic arteries. Connecting Shivajinagar, a central multi-modal hub, to Hinjawadi—a premier engine of India's information technology sector—addresses a long-standing infrastructural deficit. By offering a reliable, carbon-neutral, and time-efficient alternative to road transport, the corridor will significantly augment the daily quality of life for thousands of tech professionals and residents, while simultaneously curbing the city's vehicular carbon footprint.

Ultimately, a vibrant metropolitan area requires infrastructure that anticipates future demographic shifts rather than merely coping with past shortfalls. The Hinjawadi–Shivajinagar corridor stands as a test case for Pune's readiness to embrace a sophisticated transit-oriented development model. Through relentless execution, stringent quality oversight, and sustained multi-agency coordination, the project is steadily moving toward redefining urban mobility, setting a compelling benchmark for future regional expansion.



## Sacred stewardship: On the administrative orchestration of the 'Palkhi Sohala' !

As the holy month of Ashadha begins, Maharashtra's annual Wari pilgrimage transforms the Pune Metropolitan Region. Welcoming hundreds of thousands of pilgrims (Varkaris) walking with the sacred Palkhis of Sant Dnyaneshwar Maharaj (from Alandi) and Jagatguru Sant Tukaram Maharaj (from Dehu) requires exceptional governance. The Pune Metropolitan Region Development Authority (PMRDA) actively steps forward to serve this historic congregation.

To translate this spiritual heritage into civic action, PMRDA's Roads and Engineering Departments formulated a comprehensive mobility blueprint integrating national highways and the regional Ring Road network. The traditional spirit of this sacred journey is beautifully captured in the verse:

"पाऊले चालती पंढरीची वाट।

मुखी विडुल नाम, हाती टाळ-चिपळ्यांचा थाट।।"

To prevent injuries to barefoot pilgrims, PMRDA engineered wide, dedicated Palkhi corridors that separate pedestrians from vehicular traffic, ensuring uninterrupted devotion, as expressed by Sant Dnyaneshwar Maharaj:

"सद्गुरु राये दाखविली वाट। सुगम हा घाट पंढरीचा।।"

Guided by the ideals of the Pasayadan ("खळांची व्यंकटी सांडो..."), PMRDA launched a proactive campaign against unauthorized hoardings and illegal structures to eliminate physical hazards during the unpredictable monsoon season. Arterial roads were widened to enhance safety for pilgrims and commuters alike. To date, 75 unauthorized hoardings and illegal structures have been demolished.

Preserving the sacred Indrayani and Pawana rivers remains one of PMRDA's foremost priorities. Accordingly, the Authority has undertaken comprehensive river rejuvenation and pollution-control initiatives.

### A) Indrayani River Pollution Control Project:

With a total allocation of ₹837 crore, this project focuses on restoring water quality along the identified priority stretch. It includes extensive riverfront development at Dehu, extending from Kapur Odha to the Jagatguru Tukaram Maharaj Temple Ghat, thereby ensuring a serene and clean environment for pilgrims.

### B) Pawana River Pollution Control Project:

Budgeted at ₹218 crore, this initiative aims to mitigate industrial and urban pollution while preserving the ecological health of the wider metropolitan region.

### C) Infrastructure for Purity:

The project includes the implementation of robust Sewage Treatment Plants (STPs) and an efficient sewage network to prevent untreated wastewater from entering these sacred rivers.

### D) Solid Waste Management and Crematorium Upgrades:

Modern solid waste management systems have been installed, and local crematoriums are being upgraded with sustainable technologies to maintain environmental cleanliness.



**DEVELOPMENT & DEVOTION**

**Shivprasad Bagdi**

Chief Engineer,  
Engineering Roads Dept,  
PMRDA

**E) Traffic Management and Pilgrim Welfare**

Balancing the management of massive pilgrim gatherings with the uninterrupted daily mobility of Pune and Pimpri-Chinchwad is a formidable challenge, echoing Sant Tukaram Maharaj's timeless exhortation:

एक एका साह्य करुं । अवघें धरुं सुपंथ ॥१॥  
कोण जाणे कैसी परी । पुढें उरी ठेवावी ॥२॥  
अवघे धन्य होऊं आता । स्मरवितां स्मरण ॥३॥  
तुका म्हणे अवघी जोडी । ते आवडी चरणांची ॥४॥

Through close coordination with the police commissionerates, PMRDA implemented micro-level traffic management plans and alternative routes, minimizing disruption to residents while ensuring the dignified passage of the Palkhi procession.

Inspired by Sant Tukaram Maharaj's compassionate teaching:

"जे कारंजले गांजले । त्यासी म्हणे जो आपुले ॥  
तोचि साधू ओळखावा । देव तेथेचि जाणावा ॥"

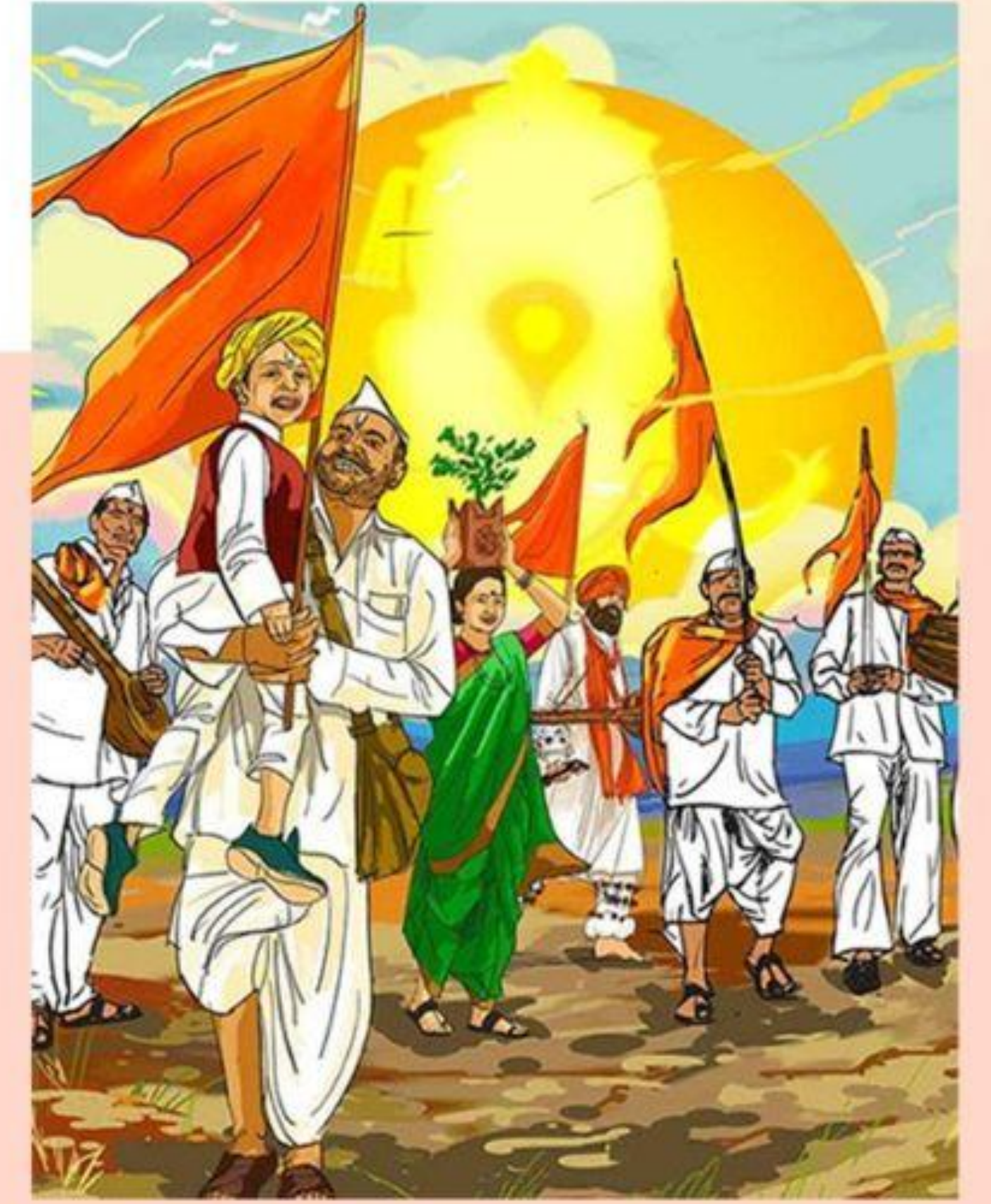
PMRDA, in collaboration with the Pimpri-Chinchwad Municipal Corporation (PCMC), deployed drinking water tankers, mobile sanitation units under the Nirmal Wari initiative, and an efficient waste management system. PMRDA service stalls along the pilgrimage route also provide drinking water, fruits, and essential medical assistance to pilgrims.

As the saying reminds us,

"चित्त शुद्ध तरी । शत्रु मित्र होते ही दरी ॥"

pure intentions have the power to overcome even the most formidable logistical challenges. The Ashadhi Palkhi Sohala is the cultural soul of Maharashtra, where PMRDA's infrastructural interventions transcend routine administration to become a meaningful expression of public service and civic devotion.

पुंडलिक वरदे दरी विठ्ठल, श्री ज्ञानदेव तुकाराम,  
पंढरीनाथ महाराज की जय!



## Equity in Allotment: On PMRDA's Housing Waitlist Activation

Institutional transparency and streamlined administrative compliance are critical to making urban housing genuinely inclusive.

The quest for affordable housing within expanding metropolitan corridors remains a fundamental pillar of equitable urban development. In this context, the Pune Metropolitan Region Development Authority's (PMRDA) decision to activate its waitlist and allot 330 tenements across Sector 12 and Sectors 30–32 represents a commendable exercise in optimizing public assets. Rather than allowing premium affordable housing stock to languish due to initial non-compliance or voluntary surrenders, the authority's systematic reallocation ensures that the ultimate objective of state welfare—providing secure shelter to deserving families—is swiftly and efficiently realized.

A critical highlight of this exercise is the preservation of institutional integrity through an algorithmic, computerized lottery system, which was originally executed on April 8, 2026. When a segment of the initial allottees failed to meet fiscal deadlines or relinquished their claims due to personal contingencies, the seamless transition to waitlisted candidates demonstrated robust administrative agility. By utilizing the identical, audited digital framework for this subsequent iteration, the PMRDA has effectively minimized discretionary intervention, thereby mitigating risks of patronage and reinforcing public trust in state-led welfare mechanisms.

The operational window provided to the 330 newly selected beneficiaries—spanning June 9 to June 25, 2026—demands swift digital compliance through the official PMRDA portal. To balance organizational financial discipline with consumer accessibility, the authority has structured a pragmatic fiscal timeline. Requiring a 25 per cent upfront deposit within 45 days, while lowering the threshold to 10 per cent for a No Objection Certificate (NOC) to facilitate institutional bank credit, is a balanced approach. This structured concession directly addresses the liquidity constraints often faced by low- and middle-income urban families, ensuring the path to homeownership remains viable.

As regional agglomerations confront unprecedented demographic and economic expansion, the vision of "Housing for All" cannot rely solely on brick-and-mortar construction; it hinges equally on transparent, fair, and responsive distribution networks. The activation of this waitlist for 330 families is more than just a routine administrative correction—it is an example of good governance. For urban planning bodies like the PMRDA, sustaining this level of procedural clarity, strict timeline adherence, and policy transparency will be vital to managing the aspirations of a rapidly modernizing metropolis.



# PMRDA Events & Achievements

**Key Visits to PMRDA-** Review Meeting  
Smt. Madhuri Misal, MoS Urban  
Development, Govt of Maharashtra



**Patrakar Samvad -** A Chat With The  
Media Dr. Abhijeet Chaudhari (IAS),  
Metropolitan Commissioner, PMRDA



**Beginning Of A New Inward Outward  
Cell In PMRDA To FastTrack Building  
Permits**



**Honouring The Engineering Brain:  
Prashant Patil, Superintending  
Engineer**



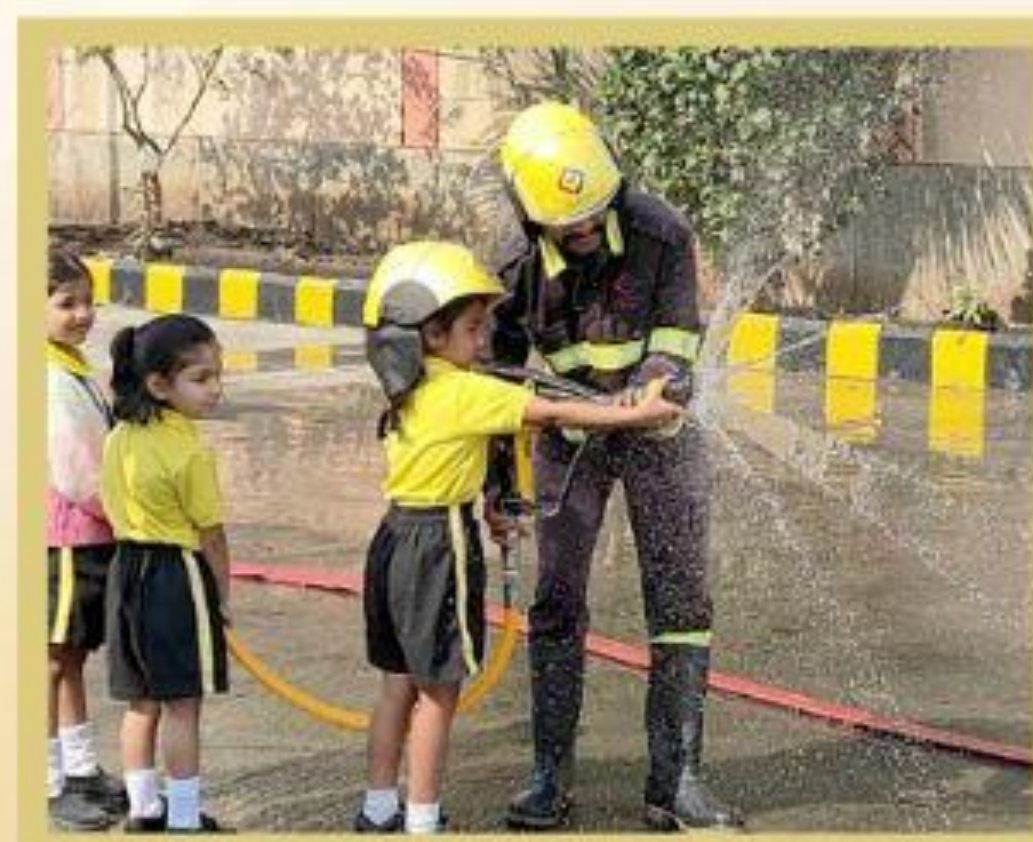
**Fire Safety Drill By Marunji Fire  
Station For Crimson Anisha Global  
School Staff Members**



**Honour & Appreciation  
For Successfully Organising  
Pune Grand Tour 2026**



**Students From Multiple Primary  
Schools Visited The Wagholi Fire  
Station For Fire Safety Awareness**





रस्ते, घाट अन् पायवाट,  
प्रत्येक मार्गावर दुमदुमेल  
विठ्ठनाचा गजर ।  
विठ्ठमाउलीच्या भेटीला निघाला,  
भक्तांचा महासागर ॥



पांडुरंगाच्या भेटीची ओढ लागलेल्या  
असंख्य वारकरी बंधू-भगिनींना  
पंढरपूर वारी व आषाढी एकादशीच्या  
हार्दिक शुभेच्छा!

डॉ. अभिजीत चौधरी (भा.प्र.से)  
महानगर आयुक्त, पीएमआरडीए

VOICE OF PMRDA  
Pulse of the Evolving Pune Metropolis

E-Newsletter | July 2026 | Issue Four

Editor-in-Chief  
**Dr. Abhijeet Chaudhari (IAS)**  
Metropolitan Commissioner

Editor  
**K. Manjulekshmi (IAS)**  
Additional Metropolitan Commissioner

Managing Editor  
**Rupali Awale-Dambe**  
Joint Commissioner (Admin)

Executive Editor  
**Purushottam Sangle**  
Information & Public Relations Officer

Editorial Assistance: **Tushar Bidave** (Assistant Public Relations Officer) & **Pactic Media Concepts, Pune**

Produced by the PMRDA Public Relations Office, this e-newsletter provides concise updates on our project progress, urban planning initiatives, key achievements, and PMRDA-supported activities. We value your input. Please send your feedback and suggestions to: [pro.pmrda@gmail.com](mailto:pro.pmrda@gmail.com)